

ResinPath

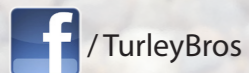
Resin Bound Aggregate Surfacing

Established over 50 years ago, we are the leading manufacturers and suppliers of HydriFlo, Concrete Blocks, Ready Mix Products and Resin Bound Aggregates in Ireland.

Please contact us with your requirements for new build, renovation or extension. We are more than happy to assist you with any technical queries and quote you for any of our products and services.

Tel: +44 (0)28 3026 6421
www.turleybros.com
www.resinbondedireland.com

Why not come and visit our showroom and experience our products and finishes.



BEFORE



AFTER

Upmarket Umber and Gold Quartz resin surfacing aesthetically enhances and adds value to homes.

ResinPath

Resin Bound Aggregate Surfacing

Safe surfacing for urban spaces

- Easy Maintenance
- Attractive and Durable
- Versatile Shapes
- Choice of Colour/Materials



ResinPath is a safe and durable Resin Bound Aggregate surface and is suitable for:

- Streets
- Parks & Gardens
- Driveways
- Tree Pits

What is it?

Resin Bound Aggregate surfaces use a UV stable clear polyurethane resin to bind together a mixture of aggregates to give a flat surface with a natural aggregate colour and good structural strength.

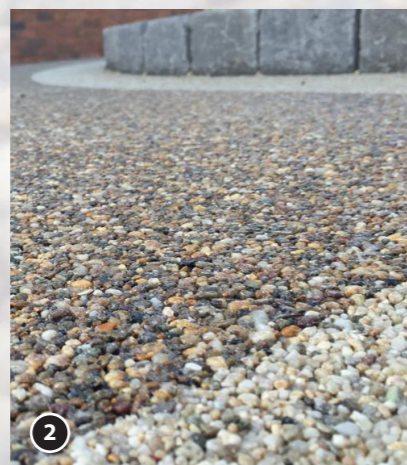
How is it used?

Resin Bound System can be used to give an extremely durable aggregate finish to Paths, Drives, Car Parks and even Roads on macadam, asphalt and concrete.

Resin Bound finishes are applied to sound, clean, dry tarmac, asphalt or concrete surfaces. A good edging detail such as York Stone or Concrete edging slabs are required. Typical laying depths would be a minimum 15mm for pedestrian areas or 18mm for driveways.

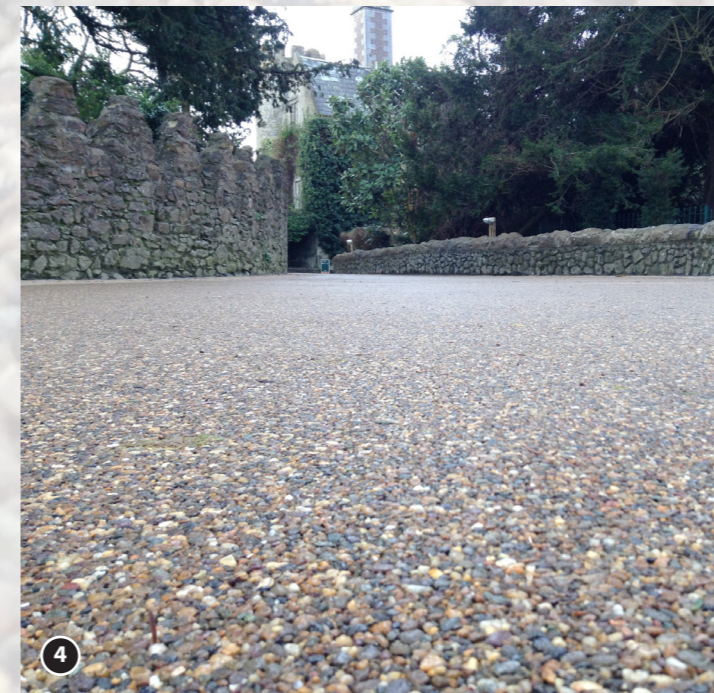
Aggregate Choice

We supply a range of different finishes in a variety of colours and textures including buff, bronze, gold, silver granite and quartz. Please see the colour page on our website and ask us for details and samples.



ResinPath blends beautifully with urban and rural environments and is:

- Easy to maintain
- Attractive and Durable
- Versatile for various shapes
- Colourful and varied textures



1. Attractive combinations for this outdoor rest area at Royal Victoria Hospital, utilising recycled glass and natural aggregates.
2. Combining grains and colours for a stylish look.
3. Great for outdoor exercise areas.
4. Malahide Castle utilises our resin bound over an extensive surface area resulting in a classy upmarket feel.
5. Applying the resin bound surfacing requires a meticulous attention to detail.
6. A bespoke mixture of natural aggregates and pigmented quartz creates a varied and versatile look for this recreation area.
7. Norwegian Pearl and a Brittany Bronze border add a touch of style to this seaside residence.

Front cover shows a mixture of surface textures and colours at Brooke Park, Derry.

ResinPath

Resin Bound Aggregate Surfacing